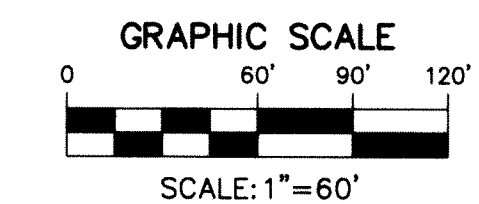
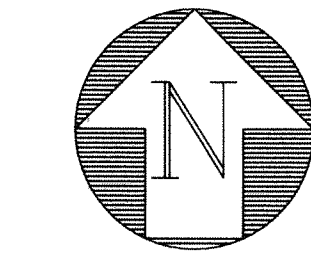


TUTTLE ROYALE

BEING A REPLAT OF SHOPPES AT VILLAGE ROYALE AS RECORDED IN PLAT BOOK 124, PAGES 68 THROUGH 71, PUBLIC RECORDS OF PALM BEACH COUNTY, FLORIDA AND BEING A REPLAT OF A PORTION OF THE PLAT OF PALM BEACH FARMS PLAT NO.3 AS RECORDED IN PLAT BOOK 2, PAGES 45 THROUGH 54, PUBLIC RECORDS OF PALM BEACH COUNTY, FLORIDA AND LYING IN A PORTION OF SECTION 36, TOWNSHIP 43 SOUTH, RANGE 41 EAST, AND SECTION 1, TOWNSHIP 44 SOUTH, RANGE 41 EAST, THE VILLAGE OF ROYAL PALM BEACH, PALM BEACH COUNTY, FLORIDA

DECEMBER 2021
SHEET 7 OF 13



STATE OF FLORIDA
COUNTY OF PALM BEACH

THIS PLAT WAS FILED FOR
RECORD AT _____

THIS _____ DAY OF _____
AND DULY RECORDED
IN PLAT BOOK NO. _____
ON PAGE(S) _____

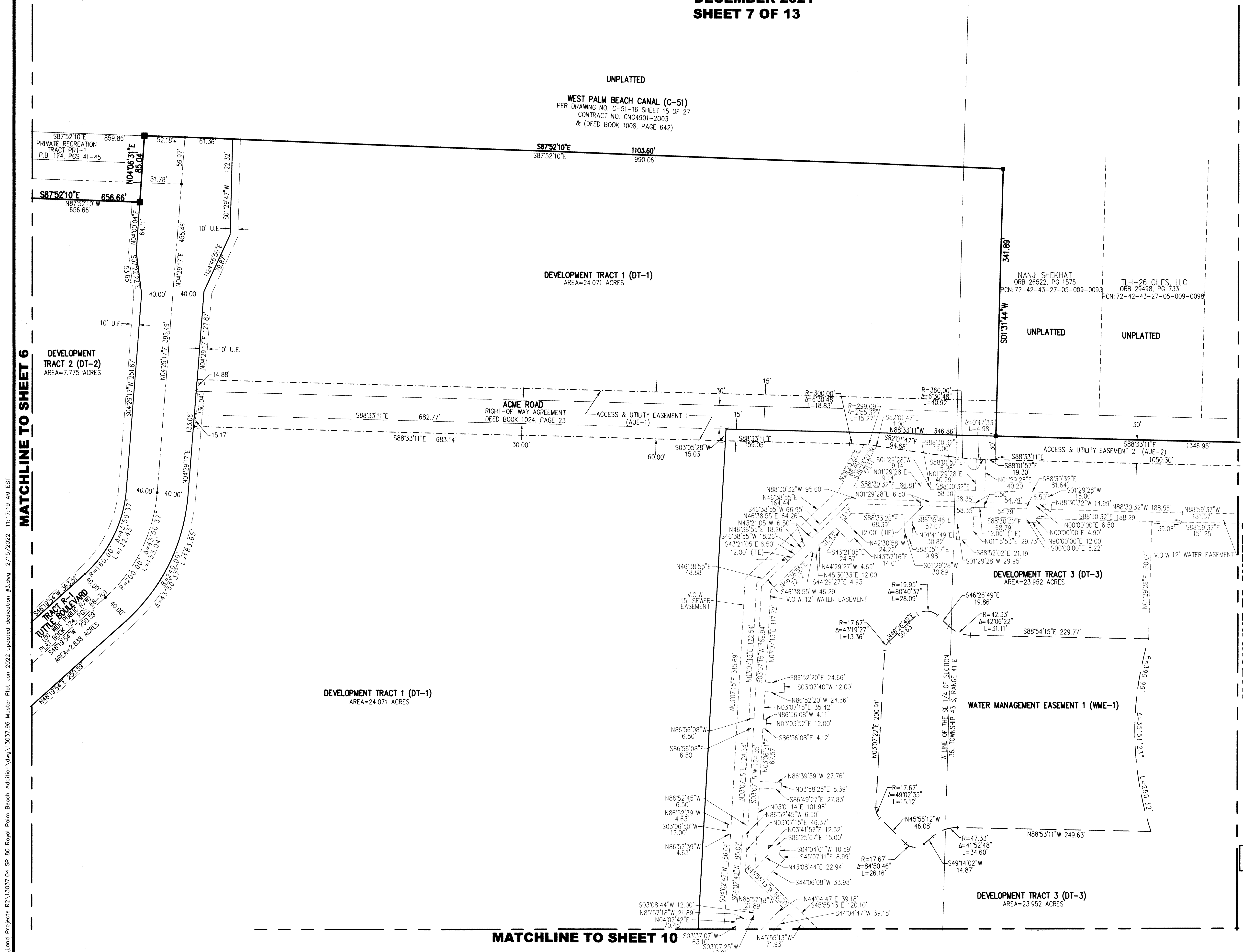
JOSEPH ABRUZZO,
CLERK AND CIRCUIT COURT &
COMPTROLLER

BY: _____
DEPUTY CLERK

107

LEGEND

- CL CENTERLINE
- LWDD LAKE WORTH DRAINAGE DISTRICT
- ORB OFFICIAL RECORD BOOK
- SFWMD SOUTH FLORIDA WATER MANAGEMENT DISTRICT
- P.B. PLAT BOOK
- PG(S) PAGE(S)
- R/W RIGHT-OF-WAY
- SET 4" X 4" CONCRETE MONUMENT WITH ALUMINUM DISK STAMPED P.R.M. LB#6603
- FOUND PERMANENT REFERENCE MONUMENT AS NOTED
- SET MAG NAIL AND DISK PCP LB#6603
- RADIUS
- ARC LENGTH
- DELTA ANGLE
- D.B. DEED BOOK
- LB LICENSED BUSINESS
- PRM PERMANENT REFERENCE MONUMENT
- PCP PERMANENT CONTROL POINT
- EASEMENT
- V.O.W. VILLAGE OF WELLINGTON
- PRT PRIVATE RECREATION TRACT



MATCHLINE TO SHEET 6

MATCHLINE TO SHEET 8

X:\Land Projects\13037.04 SR 80 Royal Palm Beach Addition\13037.96 Master Plat Job 2022 updated dedication #3.dwg 2/15/2022 11:17:19 AM EST



1280 N. CONGRESS AVENUE, SUITE 101,
WEST PALM BEACH, FLORIDA 33409
PH (561)655-1151 • FAX (561)832-9390
WWW.ENGENUITYGROUP.COM

TUTTLE ROYALE	
DATE	2/2/2022
SCALE	1"=60'
CAD FILE	13037.96 MASTER PLAT
SOSX PROJECT	13037.04 SR 80 RPB ADD.
DRAWN	STAFF
CHECKED	STAFF
SHEET NO.	7/13
	JOB NO. 13037.96